

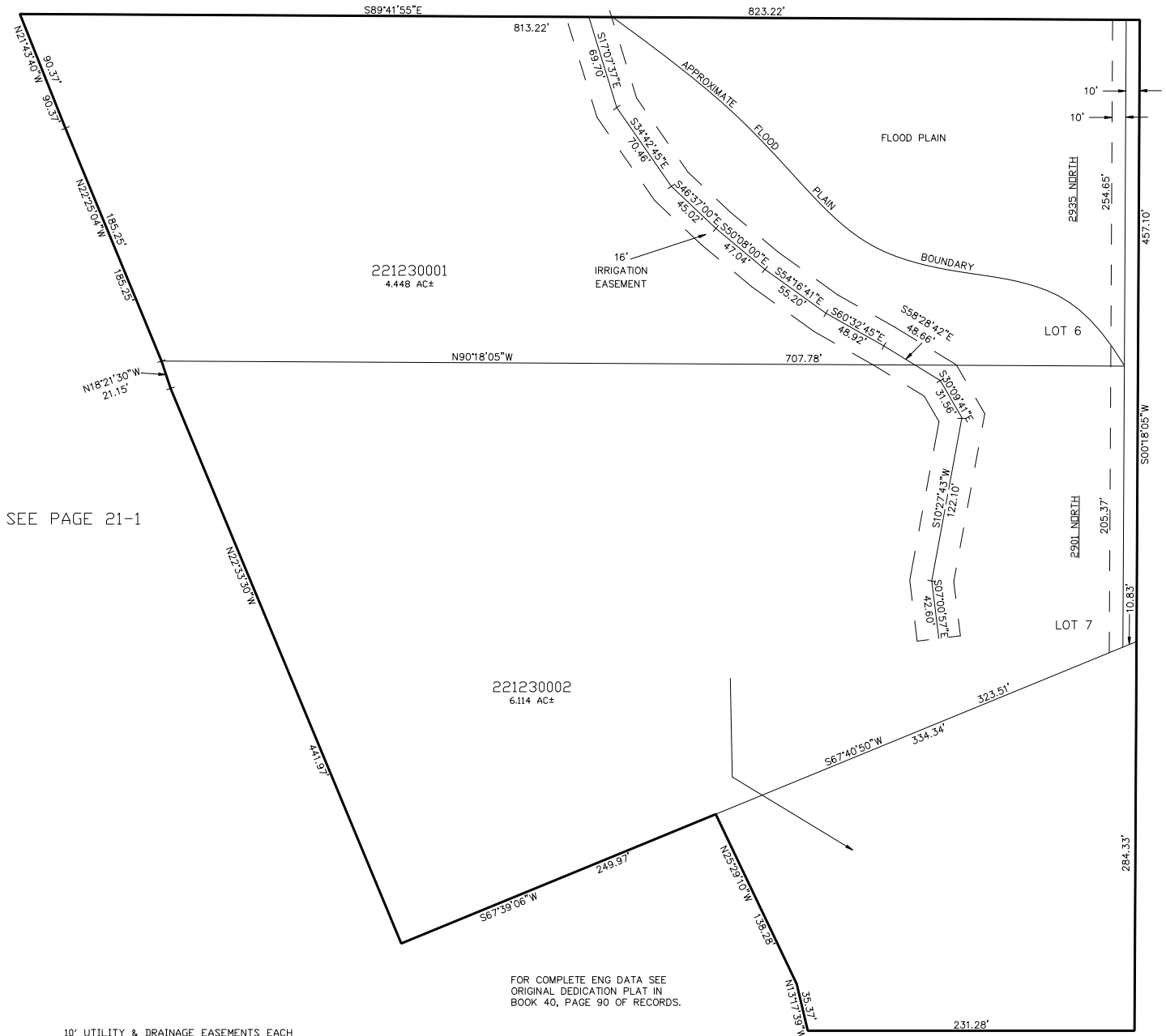
PART OF THE S.W. 1/4 OF SEC. 27, T.7N., R.1E., S.L.B. & M.
IRENE OGDEN SUBDIVISION NO. 4

IN WEBER COUNTY

SCALE 1" = 60'

TAXING UNIT: 317

SEE PAGE 21-1



SEE PAGE 21-1

FOR COMPLETE ENG DATA SEE
 ORIGINAL DEDICATION PLAT IN
 BOOK 40, PAGE 90 OF RECORDS.

SEE PAGE 21-1

10' UTILITY & DRAINAGE EASEMENTS EACH
 SIDE OF PROPERTY LINES AS INDICATED
 BY DASHED LINES EXCEPT AS OTHERWISE
 SHOWN.